



Intermediate Doll

Tania is an elf princess who is getting ready for a grand affair. She is made with the second body pattern and the face pattern (pages 276–277 in *Creative Cloth Doll Collection*). The body and clothing are very simple to put together, so that you can spend your time learning the sculpting and coloring techniques for the head.

Materials

1/4 yard (23 cm) 100% cotton fabric in skin tones
one 12-inch (30 cm) square cotton knit (a T-shirt will work great)
thread to match the fabric
mechanical pencil
strong thread for sculpting, in colors to match the fabric; button, carpet, and upholstery thread work great
stuffing
7 pipe cleaners
colored pencils in sienna brown, beige, white, carmine red, scarlet lake, lavender, canary yellow, apple green, peacock blue, process red, and Mediterranean blue
fabric pens in brown, black, red, blue, and purple
white gel pen, or white acrylic paint and a small brush
Ultimate Glitter Gel pens in pink, blue, orange, and violet
Jacquard's Lumiere paint in Halo Pink Gold, or other metallic fabric paint
Tsukineko's Fantastix for blending, or a small blending stick
a piece of bridal lace; it can have sequins and beads
pearl-colored beads, size 8, to match the bridal lace
light-colored beading thread

1/4 yard (23 cm) each of 4 different colors of silk, or silklike fabric (the sample doll uses dupioni, crinkle crepe de chine, silk gauze, and a poly/silk blend)

thread to match the silk

1 stocking from a pair of knee-hi's

1 small container of false eyelashes (can be found at drugstores)

textile medium for fixing face

brooch or antique pin for her headpiece

various ribbons in colors to match her skirt; these ribbons can be from 1/4" (6 mm) to 1" (2.5 cm) wide. You will need 3 yards (2.7 m) of each color.

silk ribbons, each 1/3" (7 mm) wide and 1 yard (0.9 m) long, in 3 different colors

12-inch (30 cm) square of craft felt

Tacky Glue (or white glue)

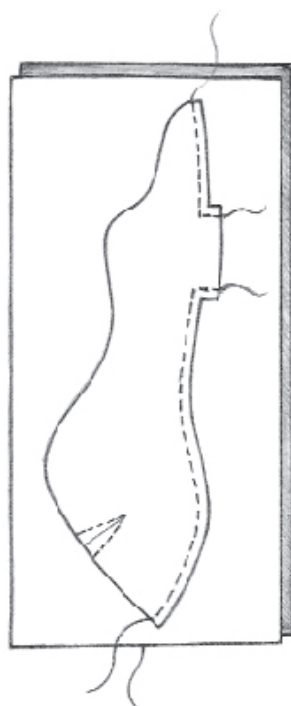
Tools

toothpicks

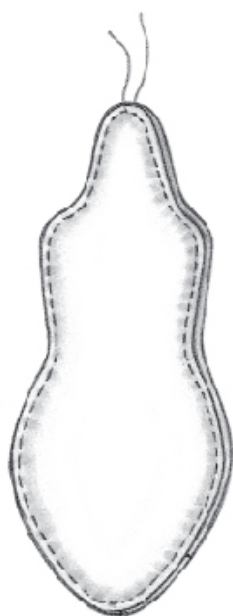
3" (7.6 cm) doll sculpting needle

turning and stuffing tools

beading needle



[Step 2]
Sewing of back, Seam #4



[Step 4]
Sewing front to back

Instructions

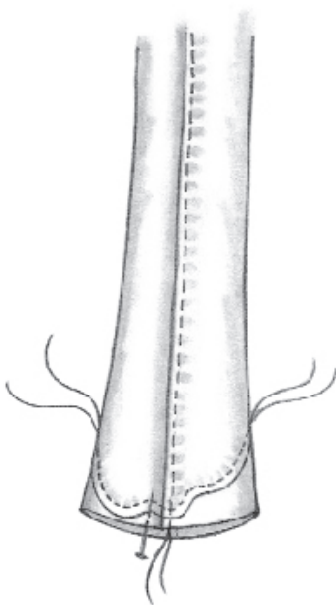
1. Trace the head, ears, arms, hands, legs, breasts, and body pieces on the wrong side of the flesh-colored cotton (see pattern, pages 276–279 in *Creative Cloth Doll Collection*). Remember—you'll need to trace two pieces each for the ears, arms, hands, and legs.

AUTHOR'S SUGGESTION

If you can't find really good-quality cotton for the body, use a cotton bed sheet that is made of 100% Egyptian or pima cotton.

2. Sew Seam #4 on the center of the back, leaving open where marked.
3. Cut out. Sew the darts on both sides of the bottom of the back.
4. Place the front of the body on the fold, and then cut out. Pin the Body Front to the Body Back, right sides together.
5. Machine sew the body pieces all the way around, starting at the top of the neck.
6. Clip the curves, turn the pieces right side out, and fill the body firmly with stuffing. Place a pipe cleaner in the neck and pack stuffing firmly around the pipe cleaner. This prevents the head from drooping later.
7. Cut out the Breasts. Trace the darts and machine sew them, right sides together.

8. Place a small amount of stuffing in each Breast. Pin the Breasts to the chest.
9. With your fingers, turn under the edges of the Breasts and hand sew them to the chest with a ladder stitch (see page 200 in *Creative Cloth Doll Collection*). Slip a little more stuffing inside each breast to fill them out. Close the Breasts, and set the body aside.
10. Machine sew the Legs all the way around, starting from the toes, leaving open where marked. Cut out the Legs with pinking shears.
11. Before turning, the toes must be sewn. Pin the toe section together with seams matching, as shown below. Draw in the type of feet you want, or use the guide in the illustration below.
12. Machine sew the toes along the line you drew. Clip the curves.
13. Cut slits at the top of each Leg, where marked. You will cut a slit only on one side. (See template, page 278 in *Creative Cloth Doll Collection*.)
14. Fill the Legs with stuffing through the slits, and then use a whip stitch to close them. Set the Legs aside.



[Steps 11–12]
Illustration 3
Drawing and sewing toes

15. Machine sew the Arms all the way around, starting from the opening at the wrist, leaving open where marked.
16. Cut out the Arms, clip the curves, and turn them right side out. Fill with stuffing. Set the Arms aside.
17. Lower the stitch length on your sewing machine from 2.0 to 1.5.
18. Carefully machine sew around the Hands, leaving open where marked. When you get to the fingers, you must machine sew two stitches across each fingertip, and two stitches between each finger. Otherwise it will be almost impossible to turn the fingers.

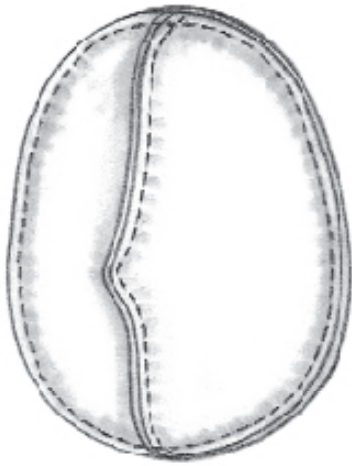


[Steps 18–19]
Cut out hands after they are sewn

19. Cut out each Hand. Use your scissors to clip between each finger. Turn the Hands, using your favorite turning tools. Insert wires in the fingers, if you wish. Fill them with stuffing.
20. Hand sew the Hands to the Arms. Don't worry about the stitches; the wrist will be covered up later on. Set the Arms aside. They won't be attached until the dress is on the body.

AUTHOR'S SUGGESTION

Why do I have you sew a “tab” on the back of the head? This gives you security when you fill the head with stuffing. And always start sewing with a backstitch. Along with the tab, this will guarantee that the seams won’t split.



[Step 2]
Sew Face to Back of Head

The Head

1. Machine sew Seam #1 on the Face, and Seam #2 on the Back of Head, leaving open where marked.
2. Cut out the two pieces. Open up the Face and the Back of Head. Pin them, right sides together. Machine sew all the way around, leaving open where marked. Clip the curves, and turn right side out. Fill firmly with stuffing, and set aside. Don't worry about the stuffing in the nose. The sculpting will keep the stuffing in there.
3. Machine sew the Ears. Cut out the pieces, turn right side out, and top stitch by machine. To do this, draw in pencil the lines you want for the inside of the ear. Then sew by machine.
4. Attach the Ears to the head with needle and thread.
5. Hand sew the head to the neck of the body.

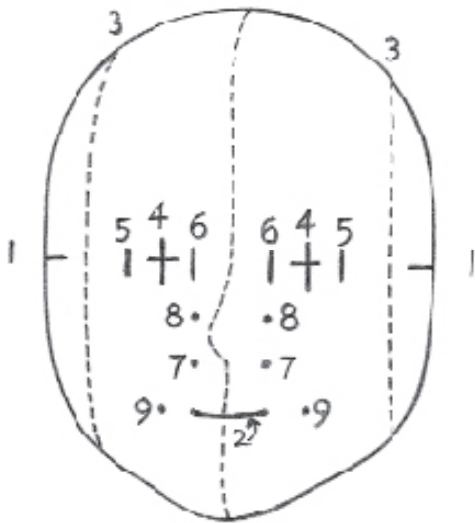
Gather your drawing and sculpting materials.

AUTHOR'S SUGGESTION

If the hemostats or forceps slip in easily, there isn't enough stuffing in the body part. Keep packing it in.

Drawing and Sculpting the Face

As with the flat face, you must first draw a grid. This time the grid is simpler, because there are already some reference points on the face from the sewing and stuffing.



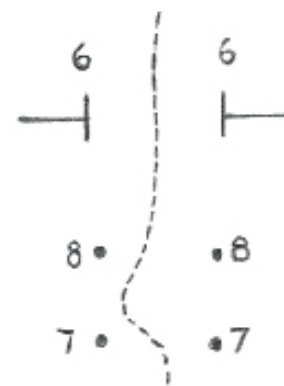
Simple grid for a profiled head

1. The seam designates the center of the face, lengthwise. To locate the center point widthwise, find where the nose starts to curve out, below the forehead. This is generally the center point between the forehead and the chin. When you have found this point, mark it with a pencil on either side of the center seam (#1).
2. Locate the halfway point between the nose and the chin. Make a mark here (#2).
3. To locate the center of the eyes, you must "slice" off a section on either side of the head. Look at the forehead to see where the top of the head starts to curve outward. Draw several dashes down the side of the head (#3).
4. Find the halfway point between one of these dashes and the center seam. Make a vertical pencil mark (#4) here; it should fall on the horizontal pencil mark (#1). Do the same on the other side.

5. For the width of each eye, you will halve each half. From each "slice" (#3) to #4, find the halfway point. Make a vertical pencil mark here (#5). Do the same on the other side.
6. Halfway between #4 and the center seam of the face, make a pencil mark (#6).

You should have one eye width between each eye. The width and the height of the eye will be the same. Refer to Chapter 1 (page 24 in *Creative Cloth Doll Collection*), for more detail on drawing eyes.

7. Measure the width of the eye, and make a pencil mark above and below #1. Draw a square, using the pencil marks as a reference.
8. The nostrils are next. You'll see a slight curve inward on the face. On each side of the center seam, directly down from #6 (the inside of the eye), make a small dot with the pencil (#7).
9. Each flare of the nose is straight up from the nostril, and halfway from the inside corner of the eye. Make a pencil mark on each side of the center seam for the flares (#8). Refer to the close-up illustration below for these two steps.



[Step 8–9]
Close-up of nose

10. The outside corners of the lips are directly below the #4 marker. Make a small dot with the pencil (#9), in line with the center of the mouth (#2).



[Step 11]
Drawing and outlining the face

11. Following the techniques in Chapter 1 (page 24 of *Creative Cloth Doll Collection*), draw the eyeballs, irises, pupils, lips, and eyebrows. Outline these with a brown pen, and erase the unnecessary pencil marks. (Also, see page 24, in *Creative Cloth Doll Collection* for more about outlining.)
12. This face will not have eyelids completely drawn; separate ones will be added.
13. Thread the 3" (7.6 cm) sculpting needle with 1 yard (0.9 meter) of strong thread, and tie a knot in the end. Anchor the thread to the back of her head (that is, take a stitch in the back of the head). If you do not anchor the thread in the back of the head, the knot could pop through the face. Refer to the chart on the next page as you sculpt.
14. Push your needle into the head and out at #1 (the inside corner of the eye).



[Steps 15–16]
Sculpting the nose

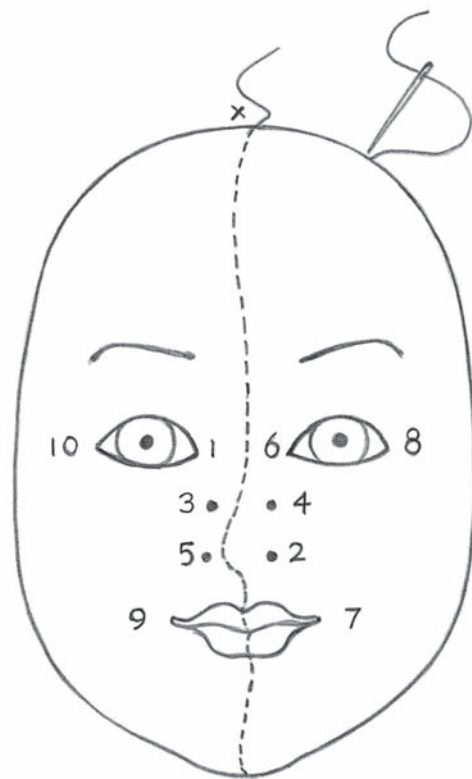
15. Go back into the head, but not too close from where you came out. This can be a vertical or a horizontal stitch. Go down to the opposite nostril (#2). As you go in and out, pull your thread to define the features—but not too tightly, or you'll get wrinkles. This is also when you'll get the stuffing back in the nose. As you sew, use your needle to pull stuffing toward the face.

16. Go back into the head, up and over to the opposite flare (#3), back into the head, and straight across to the other flare (#4).
17. Go back into the head, down to the opposite nostril (#5), back into the head, and up to the opposite inside corner of the eye (#6).



[Step 17]
Stitching from nose to eye

18. Go back into the head, and down to the outside corner of the mouth (#7), on the same side of the face. Go back into the head, and up to the outside corner of the eye (#8).
19. Go back into the head, and over to the inside corner of the opposite eye (#1). Go back into the head, and down to the outside corner of the lips (#9). Go back into the head, and up to the outside corner of the eye (#10).
20. Go back into the head, and then to the back of the head. Anchor off.



[Steps 13–20]
Chart of sculpting points

Coloring the Head

For this doll, you'll use colored pencils. There are many types and brands. All work fine on cloth, but the best are oil-based. These include Sanford Prismacolor (Karisma, internationally), Walnut Hollow Oil Pencils, and Van Gogh's Colored Pencils.

1. Start with the shading. Use sienna brown, if you have it, or another light brown. Shade the temples, around where the crease of the eyelids will be, down the sides of the nose, under the nose, around the flares, down the center seam under the nose, under the lower lip, and around the chin. Decide where your light is coming from, and shade a bit beyond the chin, toward the cheek on the shaded side of the face. Shade lightly on the upper lip, around the crease of the smile, and under the eyelids. Really rub in the color; when it is blended, it will fade quite a bit.
2. Next, with a lighter tan or beige pencil, add highlights. These are near the shading, but toward the higher points of the face: on the temples, down the sides of the nose, on the upper lip, on the chin, under the eyes, on the cheekbones, and below the eyebrows, on the brow bone.

3. Use a white pencil to lighten the center of the forehead, the tan or beige area under the eyes, the cheekbones, and the center of the chin. This may not show on your fabric, but it is very important. When the face is blended, you will see how the white prevents the other colors from covering an area.
4. Lastly, use carmine red on cheek area. Put it exactly where you would put blush on a human face, but really layer it on. (See the photo below for these steps.)
5. Wrap a piece of fabric around your index finger, and use it to blend the colors. On the sample head (below), one side is blended, and the other side is not. This shows how dark to color with the pencils. As you can see, the colors blend beautifully.
6. The eyes are next. Use three shades of one color, or three different colors in varying shades (a light, a medium, and a dark). The sample eye uses light green, grass green, and peacock blue.



[Step 1–5]
Right side of face is blended



[Steps 6–11]
Left side of face is finished

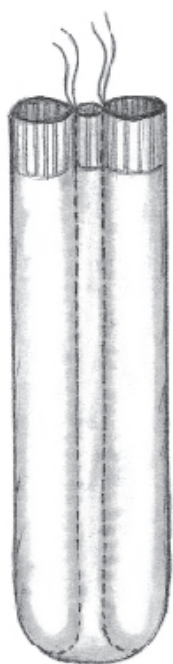
7. With the lightest shade, fill in the iris. On the side of the iris that would be in the shadow, use the medium shade; color that side and underneath the eyelid. Use the darkest shade to trace an edge where the eyelid will be, darken the upper part of the iris, and touch the upper part of the pupil. (See Chapter 1, page 30 in *Creative Cloth Doll Collection*, for a detailed illustration of the eyes.)
8. The lips are colored the same way as in the previous chapters. (See Chapter 1, page 30 in *Creative Cloth Doll Collection*, for how to add life to the lips.)
9. When you have finished the face, seal it with a textile medium, and let dry for 24 hours. It is best to do this before detailing the face, or the pens can pick up the pigment from the pencils, and get clogged.
10. While the face is drying, start on the eyelids. Cut out the eyelids. Use the end of a toothpick to put a thin band of glue along the lower edge of each eyelid. Place three false eyelashes along the outer edge of each eyelid, angling them to make sure you have a right eye and a left eye. Let dry.
11. Once the face is dry, use a black pen to fill in the pupil.

12. Use a white gel pen, or white paint and a small brush, to add a dot of highlight to each pupil, on the side of the eye that catches the light. (This is an important part of doing a face. The eyes are the windows to the soul; without this highlight, the eyes are dead.) Use your white pen or paint to whiten the whites of the eyes.
13. Add a dot of red to the inside of each eye for the tear duct (refer to Chapter 1, page 30 in *Creative Cloth Doll Collection*, for details).
14. Use a contrasting-colored pen to outline the iris, and draw the rods that radiate from the pupil.
15. Use a toothpick to spread a bit of glue along the upper edge of each eyelid. Place the eyelids over the eyes. Press them down, and lift up the center of the eyelids; this will make them look more natural. Let dry. The sample head (below) has just one eyelid, so that you can see the difference.
16. Add eyeliner with a black or brown pen.
17. To color the eyelids, start with colored pencils. The inside of the sample eyelid is colored with Process Red, and the outside with Mediterranean Blue. Next, blend the colors with a small blending stick, such as Tsukineko's Fantastix. Finally, apply glitter gel pens in matching colors.
18. Add some yellow to the upper part of the eyelid and up toward the brow. Use purple in the eye crease and down each side of the nose. On top of this, use glitter gel pens.
19. To hide the crease where the eyelid was glued, use metallic fabric paint, such as Lumiere or Stewart Gill's Byzantia paints.
20. Seal the face with the textile medium.

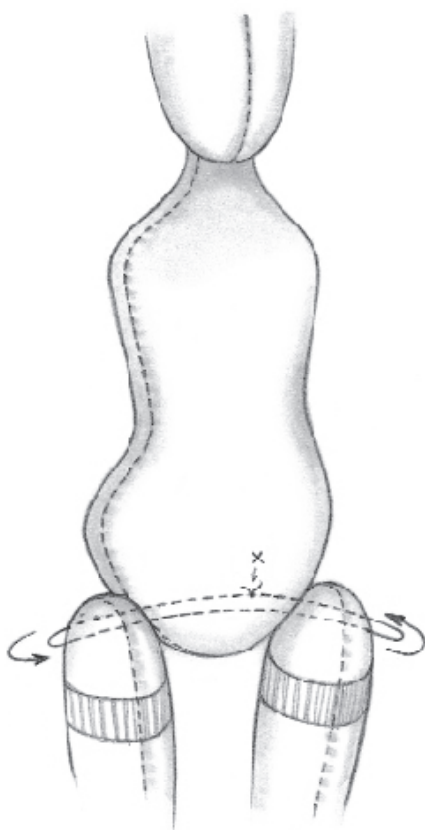


[Steps 15–19]
Add eyelids to eyes





[Step 2]
Create stockings



[Step 9]
Attach legs to body

Stockings and Shoes

It is easier to make the stockings and shoes before the legs are attached to the body.

1. Take one stocking from a pair of knee-hi's, and turn it wrong side out.
2. Machine sew, using a stretch stitch, from the bottom of the stocking up to the top, on one side. Do the same on the other side. This will create two doll stockings. Cut out the stockings, turn them right side out, and slip them on the legs. (See illustration, left.)
3. Trace two Shoe Soles on the wrong side of the fabric you have chosen for the shoes.
4. Cut a slit down the center of each traced Shoe Sole.
5. Double the fabric, right sides together, and sew all the way around. Cut out the Shoe Soles, and turn them right side out through the slit.
6. Cut out two Inner Soles from the piece of felt. Slip one into each Shoe Sole. Set aside.
7. Cut three ribbons, each 1 yard (0.9 m) long, for each Shoe.
8. Wrap three ribbons around each foot, criss-crossing from front to back. Tie the ribbons in an overhand knot at the front of the foot, just above the ankle. Hand sew beads at the center of the ribbons, as shown (right). (Instructions for making the beaded flowers are on pages 101–102 in *Creative Cloth Doll Collection*.) Hand sew the soles to the bottom of the feet.
9. Hand sew the Legs to the sides of the Body, as shown (left), using a long sculpting needle and strong thread.



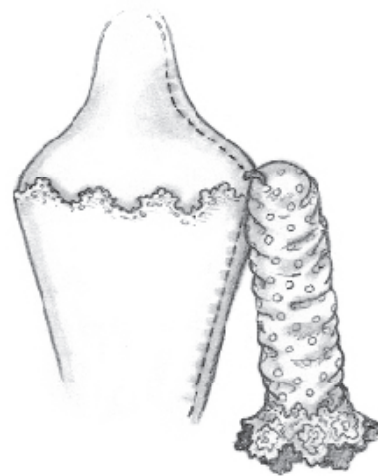


The Dress

1. Cut the four different layers of the skirt.
 - a. Bottom layer: 20" (51 cm) wide by 10" (25 cm) long
 - b. Third layer: 20" (51 cm) wide by 8½" (22 cm) long
 - c. Second layer: 20" (51 cm) wide by 7½" (19 cm) long
 - d. Top layer: 18" (46 cm) wide by 6½" (16 cm) long
2. Seal the edges of the fabric with a candle by running the edge of the silk along the edge of the flame to slightly melt it. Because silk can flare up, put your candle in a pie plate that has a little water in the bottom.
3. Machine sew the back seams of each layer, one by one, right sides together.
4. Put the layers in order, with the bottom layer first. Machine gather all layers together at the waist. It is best to use a quilting thread for this. That way, when you pull the threads to gather the skirt, the thread won't break.
5. Slip the layered skirt on the doll. Pull the threads to fit the waist, and hand sew with needle and thread directly to the body, using a running stitch.
6. Wrap the bridal lace around the doll to measure for the bodice. Cut the lace to fit, leaving enough at the back to overlap a bit.
7. Cut out the motif at the bottom of the bodice. Use any shape you like. The sample doll's bodice is staggered, giving interest to the dress.
8. Hand sew the bodice directly to the body. It is best to do this with a beading needle and thread. Some of the beads may be loose from the cutting of the lace. As you tack the lace to the body, use your needle and thread to secure any loose beads.
9. The sleeves are also made from bridal lace. Cut pieces to fit from the wrists up to the biceps, or just above the elbows. Hand sew in place, again catching any loose beads. Note: This is done before the arms are attached to the body.
10. With one of the same fabrics used in the skirt, cut out the sleeves. The sleeves are two pieces of fabric, each measuring 6½" x 5" (16.5 x 12.7 cm).
11. With right sides together, machine sew up the back seam. Turn sleeves right side out, and slip them onto the arms.
12. Bunch up the sleeves, and hand sew them in place with a beading needle and thread. Sew on matching beads as desired.
13. Hand sew the arms in place, using strong thread and a hand sewing needle. Anchor the thread at the shoulders, then go into the arm. Sew through the sleeve fabric as you go into the arm. You won't go all the way through the arm, just partway, then back into the shoulder. Repeat at least three times, then anchor off on the body, under the arm. Do the same with the other arm.

AUTHOR'S SUGGESTION

Silk dupioni will not seal via the candle method described above. If you use this type of fabric, paint the cut edge with Lumiere Halo paint. This will prevent it from fraying.



[Step 13]
Hand sew arms to shoulders



Headpiece

1. Cut one 7" (18 cm) square from each of three silk fabrics used for the skirt.
 2. Fold two of the squares into two triangles. Roll each triangle into a long shape, starting with the narrow end, rolling toward the longer edge.
 3. Wrap one of these long pieces around her head, and hand sew in place.
 4. Place the second long piece under the first one, making sure it shows. Hand sew in place.
 5. Gather the last square at its center and place it inside the first two. Hand sew in place.
 6. Cut five of the ribbons into 7" (18 cm) lengths. Cut three silk ribbons into 7" (18 cm) lengths.
 7. Tie all of the ribbons together at the center. Hand sew them to the center of the doll's head.
- Add some pearls to her neck, pin a brooch to her headpiece, and she's finished!